

#### Detailed descriptions:

1. Requesting certificate of approval to submit with an application to the city of Seattle for a 1085 permit (Sidewalk Tables and Chairs). Updated images and plan set including the dimensions of patio furniture, distance from building, distance along building, and distance of edge of furniture to edge of curb cut
2. Requesting approval for window decals and placement. Decals are temporary white vinyl lettering in the font Grotley. Decals measure ~5"x14" and are placed above 6' from sidewalk.
3. Requesting approval to use existing exterior paint color to refreshen and touch up areas of exterior paint. Paint requested has been color matched to existing paint provided by the previous business. Paint is a darker grey semi gloss exterior paint.
4. Requesting approval to remove the temporary signage that is currently above the entryway and replace with a paint. Signage will be the same color, size and placement as current signage. Paint used will be the existing exterior paint color dark grey semi gloss (as mentioned in request 3) and a white uncolored exterior semigloss paint.

#### Images:

1. Image shows edge of seating to curb cut would be 88", if chairs are moved to other side of table the max minimum would be 72"
2. Image shows the current temporary signage above entryway. We are proposing to remove the temporary vinyl decals, repaint the entire entry way in the existing dark grey, and then paint the lettering as shown with a white uncolored paint. Lettering would be ~11" x 28" which is the current dimensions.
3. Image of current exterior paint which has been color matched from paint provided by the prior business. It is a dark grey, semi-gloss exterior paint.
4. Image shows the distance of the furniture from the edge of the building. Furniture in image are placeholders though the proposed table would extend out 25". We are requesting a total space of 36" off the building to accommodate any slight movement in placement. Patio furniture will not overlap nor interfere with current inlay in sidewalk.
5. Image shows total length in distance of patio furniture along the edge of the building under the exterior window. Distance will be approximately 108".
6. Image shows the size and distance from sidewalk of window decals. Decals are a made with temporary white vinyl lettering and measure ~ 5" tall by 14" wide. Decals are placed above the 6' threshold between 74.5" and 79.5" above the sidewalk.

Decal font is printed in “Grotley” which is the same font used elsewhere in our branding.

7. Additional image of window decals showing size in a wider relation to the space. Decals are placed above the 6’ threshold and do not distract from the view inside.
8. Reuploading image from prior application of the proposed patio seating. In this image the orientation of seating to the far right is 72” from the curb cut on Ballard Ave. This is the maximum distance into the sidewalk we wish to place our seating.
9. Reuploading image from prior application of the proposed patio seating. This image shows the angle of the sidewalk along 22<sup>nd</sup> Ave NW. Wooden sign by recycling bin on right of image is not from our business. It has since been removed as it was placed by a tenant living in the building adjacent to our shop.
10. Reuploading image from prior application of the proposed patio seating. Another image of the edge of the seating to the curb cut measuring at 72”. Total measurement of seating off the building measures ~36” in this image.
11. Image shows proposed outdoor seating which would be folded up and brought inside at the end of operating hours.
12. Image shows proposed square outdoor tables which measure ~25.5”. These would be folded up and brought inside at the end of operating hours.
13. Plan Set shows a Birds-eye drawing of the proposed exterior seating in relation to the sidewalk, curbs and city trash and recycling bins. Temporary exterior seating under the entryway will be ~36”x60” by the window next to the front door. Furniture will not interfere with the ability to enter or leave the building. Furniture will be placed no closer than 125” from the nearest curb cut on 22<sup>nd</sup> Ave NW. Temporary exterior seating along the large window will be ~36”x108”, it will be 216” away from the city trash and recycling bins, and no closer than 72” from the closest curb cut on Ballard Ave.



HOMAGE  
COFFEE

HOMAGE  
COFFEE CERAMICS

CLOSED

HOMAGE  
COFFEE CERAMICS

LOCK KEY

U-10  
BROOKLYN  
JFK



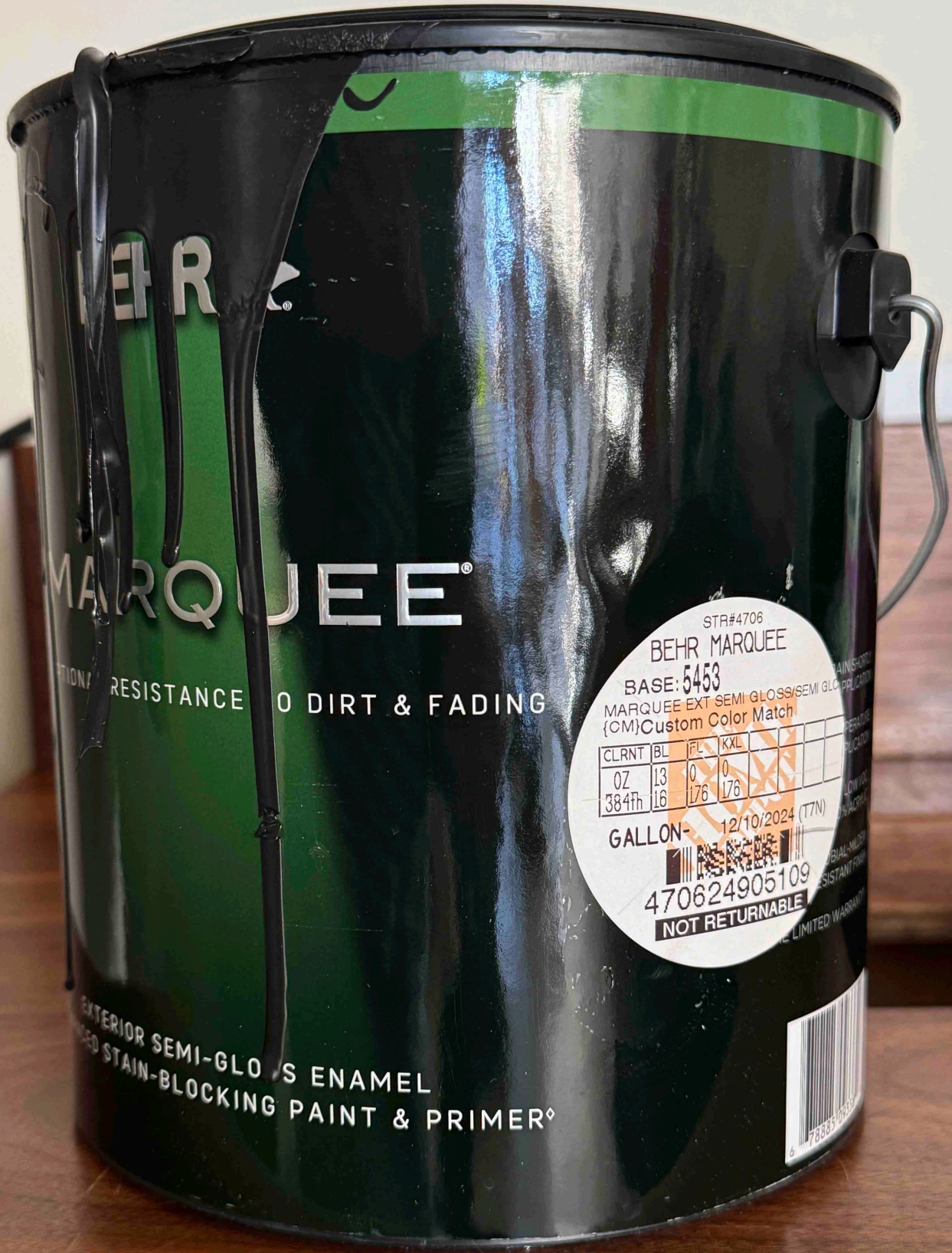
LOCK & KEEL TAV...



HOMAGE  
COFFEE | CERAMICS



LANDFILL



BEHR  
MARQUEE®

RESISTANCE TO DIRT & FADING

EXTERIOR SEMI-GLOSS ENAMEL  
STAIN-BLOCKING PAINT & PRIMER®

STR#4706  
**BEHR MARQUEE**  
 BASE: 5453  
 MARQUEE EXT SEMI GLOSS/SEMI GLOSS  
 {CM} Custom Color Match

CLRNT	BL	FL	XXL		
OZ	13	0	0		
384th	16	176	176		

GALLON- 12/10/2024 (TTN)  
 470624905109  
**NOT RETURNABLE**





# HOMAGE

COFFEE | CERAMICS

HOMAGE  
COFFEE

HOMAGE  
COFFEE | CERAMICS

HOMAGE  
COFFEE | CERAMICS

Historic Green Landmark Society  
Coca and Wagner Building  
1894-1900  
1000



HOMAGE  
COFFEE

5000

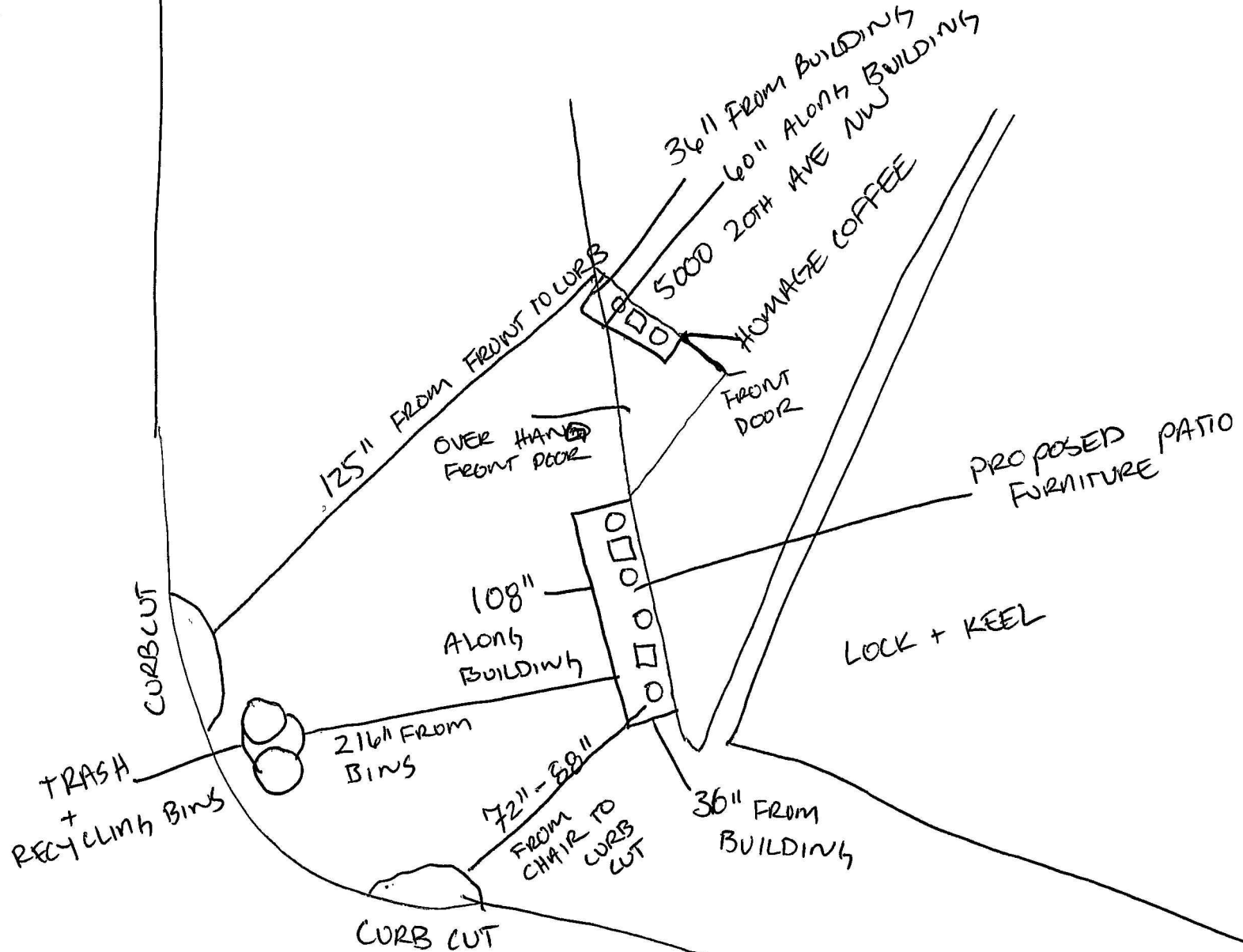
HOMAGE  
COFFEE | CERAMICS

Yelp RATING  
EXCELLENT



# HOMAGE COFFEE PROPOSED PATIO PLAN SET

20TH AVE NW



BALLARD AVE NW



 All media

 View in 3D

All media

Measurement

Material

